



Aliaxis Iberia
Infrastructure, Industry
& Agriculture



we
make
life
flow



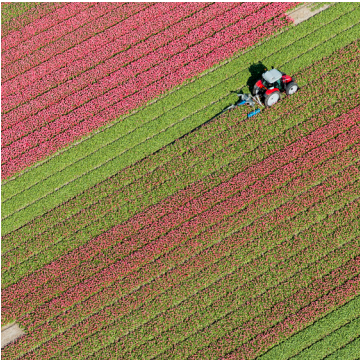
01
Infrastructure

PE pipes	06
Electrofusion fittings	10
Compression fittings	18
PE fittings	22
Mechanical fittings	26



02
Industry

Valves, pipes and fittings	30
Mechanical clamps	34



03
Agriculture

Filtration systems	40
System of PVCU pipes	44
Compression fittings	46



04
Services

Technical advice and design solutions made to measure	51
Hydraulic and mechanical calculation tool for drinking water	51
Pre and post sale technical and commercial support	52
Aliaxis Academy	52
Aliaxis Academy App	52

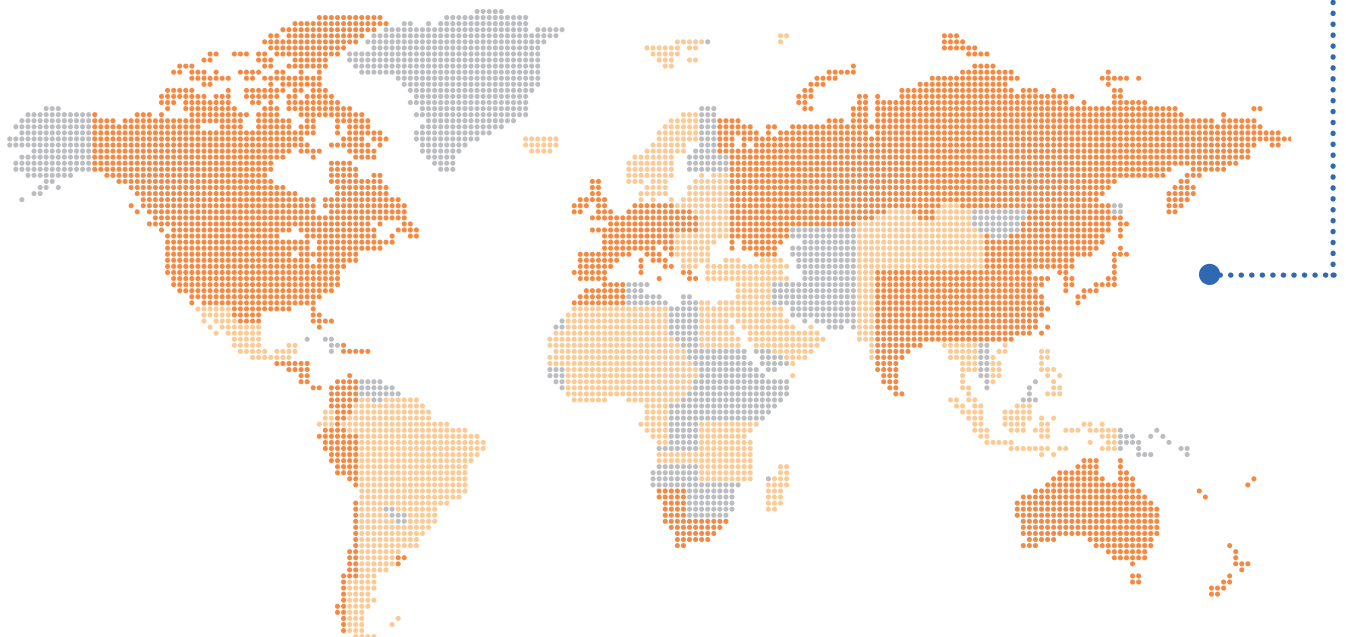
We make life flow



We deliver water and energy to where it's
needed

Our business began in **Spain in the 60s and 70s**. The joining together of **industrial companies who were experts in their sector** laid the foundations of Aliaxis Iberia.

In the last few decades, we've overcome the challenges posed by a market which has rapidly evolved and has strengthened a business that **is now a global leader, providing solutions for the transport of water and energy**.

Our entrepreneurial origin has made us in to a solid business group.



-  Countries where we operate
-  Countries where we market our solutions

Global provider, local talent

At Aliaxis Iberia, we have offices in Madrid and two factories with distribution centres in Alicante (Jimten) and in Okondo (Masa), where we employ **more than 600 professionals in Spain.**



We are passionate about creating sustainable solutions and innovations for transporting fluids, we also offer efficient piping systems to people all over the world





Infrastructure:

delivering expertise and innovation

Aliaxis offers industries and communities a broad range of solutions for water and gas distribution, sewerage, storm-water management and irrigation.

Our tailor-made solutions are the result of industry expertise gathered from all our global businesses. In a rapidly changing world, we offer you security and cost-effectiveness for your networks. Our connection technology for piping systems is the heart of every supply and disposal system. Whatever connection you need, we have the right solution for you. All products are easy to install, durable and particularly safe.



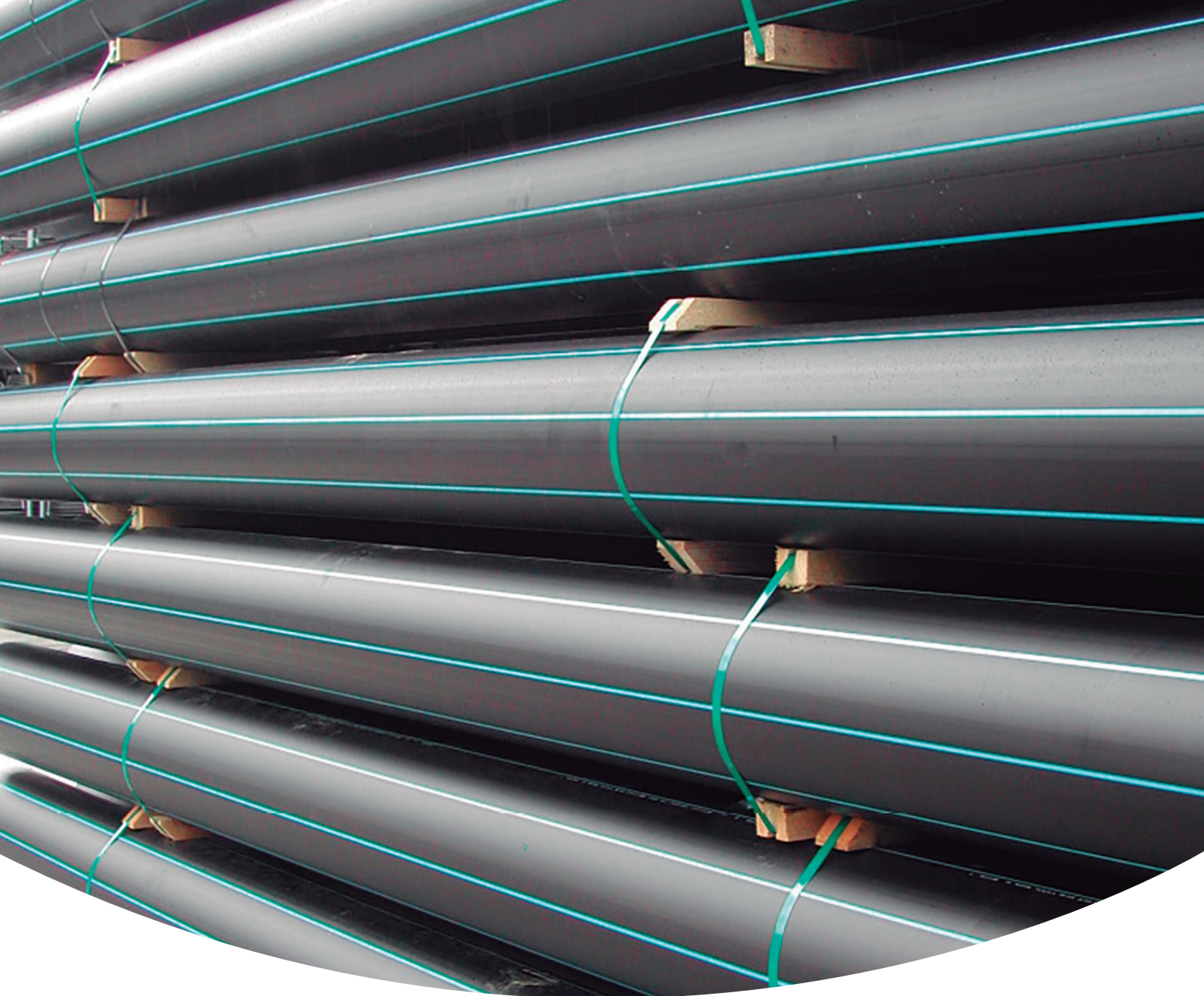
Water - We ensure that you can operate the safest water supply network and save time and money. Thanks to high-quality materials, our products have excellent corrosion protection and hygiene problems are avoided. Our portfolio includes electrofusion joints, mechanical couplings and tools.



Gas - We provide you with an extremely secure gas supply network that is particularly economical to operate. You also benefit from comprehensive customer service and training. As a leading supplier of connecting elements for gas pipes, we provide you with a comprehensive product selection for outstanding results.

Our infrastructure solutions are:

- PE pipes
- Frialen electrofusion fittings
- Compression fittings
- PE fittings
- Mechanical fittings
- Mechanical accessories



PE pipes

For water and gas supply (Flexipol and Gasypol)





Comprehensive polyethylene-pipe solutions for supplying drinking water

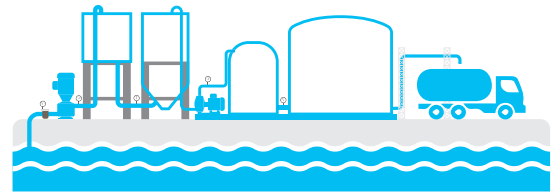
Characteristics

- Available in PE 40 and PE 100
- Sizes vary from 20 mm to 1000 mm.
- Available in standard SDR 17/11/26 (other SDR are available upon request)
- Standard roll lengths of 50 m and 100 m (other lengths are available upon request)
- Standard bar lengths of 6 m and 12 m (other lengths are available upon request)
- Complete range of compatible accessories
- In compliance with EN12201

Benefits

- Flexible, lightweight and corrosion resistant
- Low friction and high flow rate
- Suitable for various installation techniques save on transport and installation
- The security of a continuous and flexible supply to customers
- Reducing our carbon footprint

Applications

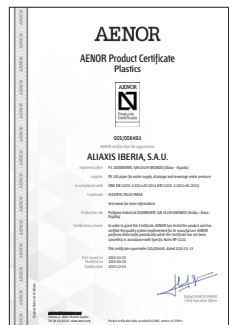


By offering reliable performance for an expected use life of 100 years, Aliaxis provides pipes and fittings made from completely certified polyethylene (PE), which support our clients' need to maintain drink water quality across their distribution network, while also delivering excellent value along the whole supply chain.

Certifications

Approved with
ISO 9001 / ISO 14001

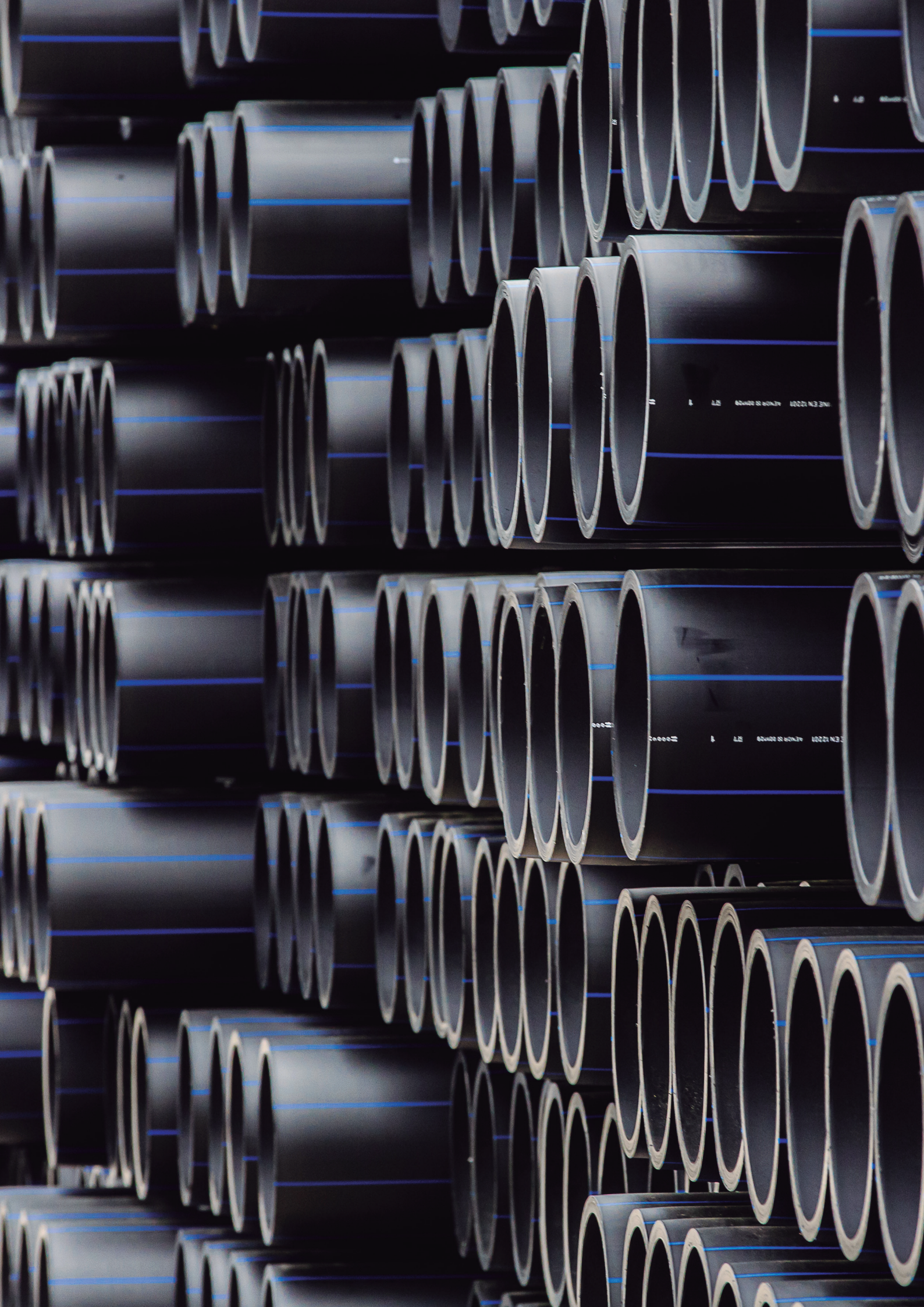
Approved with
EN 12201 / ISO 4427





Pipe Dimensions

	PE 40	SDR 11 6 BAR				SDR 17 -				SDR 21 -				SDR 26 -			
	PE 100	16 BAR				10 BAR				8 BAR				6 BAR			
Size (mm)	Max OD (mm)	Min t (mm)	Max t (mm)	Mean Weight (kg/m)	Mean Bore (mm)	Min t (mm)	Max t (mm)	Mean Weight (kg/m)	Mean Bore (mm)	Min t (mm)	Max t (mm)	Mean Weight (kg/m)	Mean Bore (mm)	Min t (mm)	Max t (mm)	Mean Weight (kg/m)	Mean Bore (mm)
20*	20.3	2.0	2.3	0.1	15.2	-	-	-	-	-	-	-	-	-	-	-	-
25	25.3	2.3	2.7	0.2	20.2	-	-	-	-	-	-	-	-	-	-	-	-
32	32.3	3.0	3.4	0.3	25.8	-	-	-	-	-	-	-	-	-	-	-	-
50	50.4	4.6	5.2	0.7	40.4	-	-	-	-	-	-	-	-	-	-	-	-
63	63.4	5.8	6.5	1.0	50.9	-	-	-	-	-	-	-	-	-	-	-	-
75	75.5	6.8	7.6	1.5	60.9	4.5	5.1	1.0	65.7	-	-	-	-	-	-	-	-
90	90.6	8.2	9.2	2.1	72.9	5.4	6.1	1.5	78.8	-	-	-	-	-	-	-	-
110	110.7	10.0	11.1	3.2	89.3	6.6	7.4	2.2	96.4	-	-	-	-	-	-	-	-
125	125.8	11.4	12.7	4.1	101.3	7.4	8.3	2.8	109.7	-	-	-	-	-	-	-	-
160	161.0	14.6	16.2	6.7	129.7	9.5	10.6	4.6	140.4	7.7	8.6	3.7	144.2	6.2	7.0	3.1	147.3
180	181.1	16.4	18.2	8.5	146.0	10.7	11.9	5.8	158.0	8.6	9.6	4.7	162.4	6.9	7.7	3.8	166.0
200	201.2	18.2	20.2	10.5	162.2	11.9	13.2	7.1	175.5	9.6	10.7	5.8	180.3	7.7	8.6	4.7	184.3
225	226.4	20.5	22.7	13.3	182.5	13.4	14.9	9.0	197.4	10.8	12.0	7.4	202.9	8.6	9.6	5.9	207.5
250	251.5	22.7	25.1	16.3	203.0	14.8	16.4	11.1	219.6	11.9	13.2	9.0	225.7	9.6	10.7	7.4	230.5
280	281.7	25.4	28.1	20.5	227.4	16.6	18.4	13.9	245.9	13.4	14.9	11.4	252.6	10.7	11.9	9.2	258.3
315	316.9	28.6	31.6	25.9	255.8	18.7	20.7	17.6	276.6	15.0	16.6	14.3	284.4	12.1	13.5	11.7	290.4
355	357.2	32.2	35.6	32.9	288.3	21.1	23.4	22.4	311.6	16.9	18.7	18.2	320.5	13.6	15.1	14.8	327.4
400	402.4	36.3	40.1	41.8	324.6	23.7	26.2	28.3	351.3	19.1	21.2	23.2	360.9	15.3	17.0	18.7	368.9
450	452.7	40.9	45.1	52.9	365.4	26.7	29.5	35.9	395.2	21.5	23.8	29.3	406.1	17.2	19.1	23.7	415.1
500	503.0	45.4	50.1	65.2	405.8	29.7	32.8	44.3	439.0	23.9	26.4	36.1	451.2	19.1	21.2	29.2	461.2
560	563.4	50.9	56.0	81.7	454.9	33.2	36.7	55.5	491.8	26.7	29.5	45.2	505.5	21.4	23.7	36.6	516.6
630	633.8	57.2	63.1	103.6	511.4	37.4	41.3	70.3	553.2	30.0	33.1	57.1	568.8	24.1	26.7	46.4	581.1
710	716.4	64.5	71.1	131.5	577.6	42.1	46.5	89.1	624.6	33.9	37.4	72.6	641.9	27.2	30.1	58.9	655.9
800	807.2	-	-	-	-	47.4	52.3	113.1	703.9	38.1	42.1	92.1	723.4	30.6	33.8	74.7	739.2
900	908.1	-	-	-	-	53.3	58.8	142.9	792.0	42.9	47.3	116.4	813.9	34.4	38.3	94.8	831.4
1000	1009.0	-	-	-	-	59.3	65.4	176.5	879.8	47.7	52.6	143.8	904.2	38.2	42.2	116.5	924.1





Electrofusion fittings

To connect polyethylene pipes





FRIATEC'S world-leading patented electrofusion systems have been used in projects all around the world. These innovative electrofusion products are made in Germany and include many unique features, all of which are designed to improve the speed of installation and use without compromising on quality and longevity.

FRIATEC'S electrofusion fittings offer superior jointing of High Density Polyethylene (HDPE) material. Their unique features and benefits include: durability, safe and easy installation,

superior design with exposed heating coils for improved hold, longer fusion zones for more grip, and larger insertion depths. The fittings are also available in an extensive range of sizes.



Aliaxis Iberia offers solutions for the connection or repair of pipelines in **water supply, sewage and waste water, gas supply and industry applications.**





Products' Highlights

FRIALEN – safety fittings are the safe jointing technology and matching equipment for gas, water-and industrial piping made of HD-PE and PE-Xa for operating pressures up to 25 bar (water) and 10 bar (gas).

The unique design of FRIALEN electrofusion fittings incorporates exposed heating coils to provide consistent heat transfer during fusion and to achieve maximum bonding between the materials. FRIALEN fittings are lightweight, resistant to corrosion, have excellent chemical durability and exceptional fusibility. The exposed heating coils of FRIALEN fittings provide consistent heat transfer during fusion and also optimum homogenous connection between materials. Fittings also have a large insertion depth for the pipe ends, further aiding reliability and safety of the connections.

Frialoc PE Shut-Off Valve with Innovative Two-Valve System

FRIALOC is the world's first all-fused, homogeneous PE piping system without flange, gaskets, or metal transition fittings. PE also presents additional advantages in the form of long life, reliability, and cost effectiveness for the entire piping network.

Dimensions: d. 90 to d. 250, PE100 SDR 11.
Maximum operating pressure for water PFA 16 bar.

Pressure Tapping Valve Dav with Red Snap – Perfect fit onto the pipe & superior long lasting materials

In addition to the fast assembly and simple alignment on the pipe, no further control for the proper clamping needed: clamping instead of screws, with tools. Fast, easy and safe to install with the RED SNAP – universal for gas- and water use.

Particularly hygienic through to the use of suitable and approved materials. A durable and economical solution, the DAV with RED SNAP offers up to 50% shorter installation times.

Dimensions: d 110 to d 225, PE100 SDR 11.
Maximum operating pressure for water PFA 16 bar and 10 bar for gas.





Frialen Safety Fittings Range

Electrofusion Couplings PE100	SDR	Diameter	Maximum Operating Pressure	Application
UB Slide-over couplers	SDR 7.4	d 90 - 355	25 bar	Water
	SDR 9	d 400 - 630	20 bar	Water
	SDR 11	d 16 - 1000	16 bar (water) and 10 bar (gas)	Water & Gas
	SDR 17	d 315 - 1200	10 bar (water) and 5 bar (gas)	Water & Gas
MB Couplers with removable stop	SDR 11	d 20 - 160	16 bar (water) and 10 bar (gas)	Water & Gas
FRIALONG Long couplers with removable stop	SDR 11	d 32 - 63	16 bar (water) and 10 bar (gas)	Water & Gas
KM XL Conical Ring couplers	SDR 17	d 355 - 1200	10 bar (water) and 5 bar (gas)	Water & Gas
REM Relining Slide-over couplers	SDR 17	d 110/100 - 315/300	10 bar (water) and 5 bar (gas)	Water & Gas
MV End caps	SDR 11	d 20 - 225	16 bar (water) and 10 bar (gas)	Water & Gas
MR Electrofusion Reducers	SDR 11	d 20 - 225	16 bar (water) and 10 bar (gas)	Water & Gas
FRIASTOPP P Long couplers with integrated Pipelife Gas-Stop system	SDR 11	d 32 - 63	5 bar	Gas
FRIASTOPP M Long couplers with integrated Mertik Maxitrol excess flow valve	SDR 11	d 32 - 63	5 bar	Gas
MR STOPP Electrofusion Reducers	SDR 11	d 50 - 63	5 bar	Gas

Valves PE100	SDR	Diameter	Maximum Operating Pressure	Application
DAV Pressure Tapping Valve and fast clamping lever RED SNAP	SDR 11	d 110 - 225	16 bar (water) and 10 bar (gas)	Water & Gas
DAV Pressure Tapping Valve top-loading w/ extra long outlet spigot	SDR 11	d 250/315 - 355/400	16 bar (water) and 10 bar (gas)	Water & Gas
FRIALOC Shut-off Valve	SDR 11	d 90 - 250	16 bar	Water
KHP Ball valves in HD-PE w/ NBR sealing, 1/4 turn	SDR 11	d 32 - 225	10 bar	Gas
KHP Ball valves in HD-PE w/ NBR sealing, 1/4 turn full port passage	SDR 11	d 20 - 125	10 bar	Gas
KHW Ball valves in HD-PE w/ EPDM sealing, 1/4 turn full port passage	SDR 11	d 32 - 63	16 bar	Water
AKHP Tapping ball valves in HD-PE, 1/4 turn, for side tapping under pressure	SDR 11	d 110 - 225	10 bar	Gas
AKHP Tapping ball valves in HD-PE, 1/4 turn, top lading	SDR 11	d 250/450	10 bar	Gas

Pressure Tapping Tees PE100	SDR	Diameter	Maximum Operating Pressure	Application
DAA Pressure Tapping Tees w/ extra long outlet spigot	SDR 11	d 40x20 - 225x63	16 bar (water) and 10 bar (gas)	Water & Gas
DAA TL Pressure Tapping Tees top loading	SDR 11	d 250/315	16 bar (water) and 10 bar (gas)	Water & Gas
DAP Pressure Tapping Tees with parallel dome and extra long outlet spigot	SDR 11	d 63 - 225	16 bar (water) and 10 bar (gas)	Water & Gas
K Caps for pressure tapping tees	SDR 11	d 50	16 bar (water) and 10 bar (gas)	Water & Gas

Spigot Saddles PE100	SDR	Diameter	Maximum Operating Pressure	Application
SA Spigot saddles	SDR 11	d 63 - 225	16 bar (water) and 10 bar (gas)	Water & Gas
SA TL Spigot saddles top loading	SDR 11	d 250/560x32 - 250/560x63	16 bar (water) and 10 bar (gas)	Water & Gas
SA UNI Spigot Saddles	SDR 11	d 250/280x90 - 450/900x160	16 bar (water) and 10 bar (gas)	Water & Gas
SAFL Spigot Saddles with flange outlet	SDR 11	d 110/80 - 225/100	16 bar (water) and 10 bar (gas)	Water & Gas
SA XL Spigot Saddles	SDR 11	d 400 - 900	16 bar (water) and 10 bar (gas)	Water & Gas
SA XL Spigot Saddles	SDR 11	d 1000 - 1200	10 bar (water) and 5 bar (gas)	Water & Gas



Frialen Safety Fittings Range

Fittings PE100	SDR	Diameter	Maximum Operating Pressure	Application
T-pieces	SDR 11	d 75 - 225	16 bar (water) and 10 bar (gas)	Water & Gas
T-pieces XL	SDR 11	d 250 - 315	16 bar (water) and 10 bar (gas)	Water & Gas
T-pieces reduced XL	SDR 11	d 250 - 315	16 bar (water) and 10 bar (gas)	Water & Gas
T-Pieces with HD-PE/GGG adapter for connection of BAIO® spigot hydrant	SDR 11	d 100/80 - 160/80	16 bar	Water
1/A Elbows 11°	SDR 11	d 110 - 225	16 bar (water) and 10 bar (gas)	Water & Gas
Elbows 30°	SDR 11	d 90 - 225	16 bar (water) and 10 bar (gas)	Water & Gas
Elbows 45°	SDR 11	d 25 - 225	16 bar (water) and 10 bar (gas)	Water & Gas
Elbows 45° XL	SDR 11	d 250 - 315	16 bar (water) and 10 bar (gas)	Water & Gas
Elbows 90°	SDR 11	d 20 - 225	16 bar (water) and 10 bar (gas)	Water & Gas
Elbows 90° XL	SDR 11	d 250 - 315	16 bar (water) and 10 bar (gas)	Water & Gas
Swan Neck Bend	SDR 11	d 232 - 63	16 bar (water) and 10 bar (gas)	Water & Gas
90 Elbows 90° with base unit	SDR 11	d 90 - 110	16 bar	Water
Elbows 90° HD-PE/GGG adapter for connection of BAIO® spigot hydrant	SDR 11	d 110/80	16 bar	Water

Transition Fittings PE100	SDR	Diameter	Maximum Operating Pressure	Application
USTR Transition Fittings HD-PE/Steel	SDR 11	d 30/25 - 225/200	10 bar	Gas
USTRS Transition Fittings HD-PE/Steel (spigot fittings)	SDR 11	d 20/15 - 630/600	10 bar	Gas
UFLG Transition Fitting for liquid gas HD-PE/Copper	SDR 11	d 32/20	5 bar	Gas
USTN Transition Fittings HD-PE/Steel w/ male thread	SDR 11	d 32 - 63	5 bar	Gas
USTM Transition Fittings HD-PE/Steel w/ female thread	SDR 11	d 32 - 63	5 bar	Gas
MUN Transition Fittings HD-PE/Brass w/ male thread	SDR 11	d 32 - 75	16 bar	Water
MUN V2A Transition Fittings HD-PE/Steel w/ male thread	SDR 11	d 40 - 63	16 bar	Water
MUM Transition Fittings HD-PE/Gunmetal w/ female thread	SDR 11	d 32 - 63	16 bar	Water
UAM ET Universal Adapter HD-PE/Brass w/ travelling nut & female thread	SDR 11	d 25 - 63	16 bar	Water
WUN 90 Transition Elbows HD-PE/Brass w/ male thread	SDR 11	d 32 - 63	16 bar	Water
WUN V2A Transition Elbows HD-PE/Stainless Steel w/ male thread	SDR 11	d 40 - 63	16 bar	Water
UAN Universal Adapter HD-PE/Brass w/ male thread	SDR 11	d 20 - 125	16 bar (water) and 5 bar (gas)	Water & Gas
UAM Universal Adapter HD-PE/Brass w/ female thread	SDR 11	d 20 - 125	16 bar (water) and 5 bar (gas)	Water & Gas

Friatools Electrofusion Units	SDR	Diameter	Maximum Operating Pressure	Application
FRIAMAT Basic		Universal fusion unit without documentation function		
FRIAMAT Eco		Universal fusion unit without documentation function		
FRIAMAT Prime		Universal fusion unit with traceability and documentation function		
FRIAMAT Prime Eco		Universal fusion unit with documentation and traceability function and Bluetooth		
FRIAMAT XL		Large pipe fusion unit with traceability and documentation function		









Compression fittings

For connecting polyethylene pipes and complete solutions for home installations

MAGNUM 3G

MAGNUM 3G



MAGNUM 3G is made in Europe and is a newly-designed compression fitting. It is widely known as the most innovative product and is revolutionary for connecting polyethylene pipes.

The MAGNUM 3G compression fittings have been designed to optimise performance and are based on a hydraulically-sealed, low-interference, "Slide and Tighten" system. This special system guarantees the pipes' insertion into fittings with a highly reduced level of manual force and a level of safety which is totally

operative. It includes a range of brass-threaded fittings for a quicker, easier and more reliable installation, which need a lower level of insertion force due to low friction with the pipe.



An ideal solution used all over the world by water businesses, civil contractors and plumbers for various applications: water supply, watering and pool systems.



MAGNUM 3G

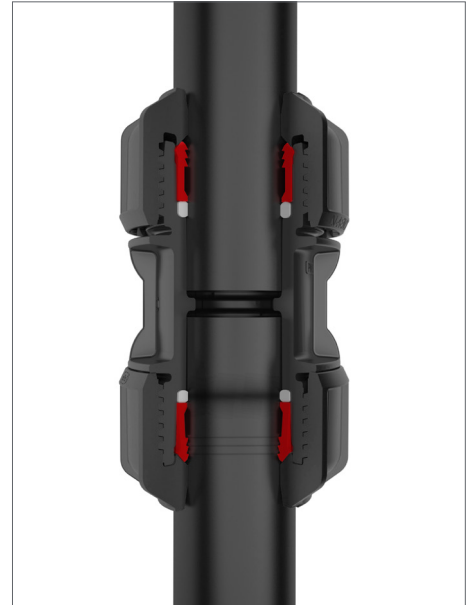
Key product features

MAGNUM 3G is the next generation of compression fittings and include the following advantages:

Quick and easy installation with the Slide & Tighten technology which doesn't need pipe preparation. It has a compact design which allows for its use in reduced spaces.

Complete safety with its dynamic sealing method, including a tightening indicator and locking system in the pipe.

MAGNUM 3G doesn't let any light through, thus protecting the water quality in drinking water pipes from the growth of micro-organisms.

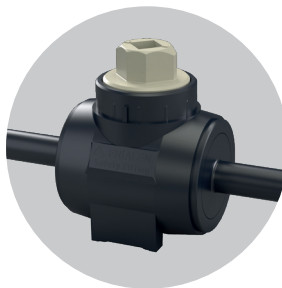


Solutions for network connections

With regard to the infrastructure and building sectors, our main partners are water companies.



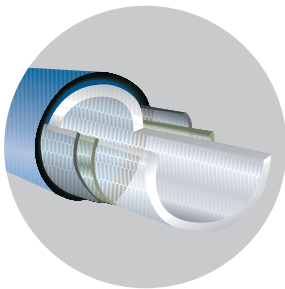
FRIALEN tapping saddle
1/4 turn fusion welded PE
100 PN 16



Válvula de acometida FRIALEN
1/4 de vuelta soldadura por
fusión PE 100 PN 16



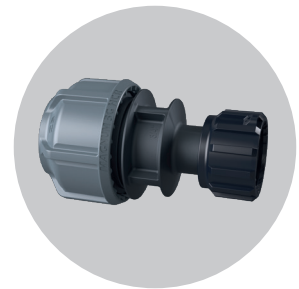
FRIALEN fusion socket PE
100 PN 16



Excel-Plus pipe PE100 PN16
with inner PVDF lining



Meter valve



MAGNUM 3G HCR Series

Magnum 3G Product Range

Compression Fittings	Diameter
Couplings	d 16 - 110
Slip Couplings	d 20 - 63
Reducing Couplings	d 20 - 110
45° Elbow	d 32 - 63
90° Elbow	d 16 - 110
Male Threaded 90° Elbow	d 16 - 63
Female Threaded 90° Elbow	d 16 - 110
Tee 90°	d 16 - 110
Slip Tee 90°	d 20 - 63
Male Threaded Tee 90°	d 25 - 63
Female Threaded Tee 90°	d 16 - 110
Reducing Tee 90°	d 25 - 63
Wall Plate Elbow 90°	d 20 - 25
Flanged Adaptor	d 50 - 110
Male Adaptor	d 16 - 110
Femal Adaptor	d 16 - 110
Tank Connector	d 25 - 32
End Cap	d 16 - 110



PE fittings

For supplying drinking water





FIP pressure fittings are manufactured in Europe and have been used for years in areas of application where pipe systems have to meet high standards in durability and reliability. These standards are achieved by combining the excellent material properties of Polyethylene (PE) to create homogeneous welded joints which can withstand significant loads.

The FIP PE100 pressure piping system has optimal thermal stability, high flexibility of use and

robust impact resistance. These features make it suitable for installation in a variety of industrial processes and environmental conditions.



FIP PE 100 fittings are ideal for **water treatment installations, waste water transport, swimming pool construction, industrial process pipe systems, transport of solids.**





Products' Highlights

FIP PE 100 fittings for butt-welding offer many benefits:

Optimal thermal stability

The wide temperature range from -40°C to 60°C ensures that PE pressure piping system is extremely suitable for the installation in different industrial process and environmental conditions.

Smooth internal wall

The PE pressure system is suitable for the transportation of solids, gravel and sands in dredging and mining industry.

High flexibility

PE pressure system is suitable for underground pipes through adjustment to local ground movement.

High impact resistance

The high impact resistance jointed to the good chemical resistance make PE piping system extremely suitable for the transportation of clean water, waste water and light chemicals.

UV resistant

Application in open air unrestricted through coloring with carbon black.





FIP PE 100 Product Range

Short fittings for butt-welding	SDR	Diameter	Working Pressure	Application
Stub flanges	SDR 33	d 110 - 800	3.2 bar	Water
	SDR 17	d 50 - 800	10 bar (water) and 5 bar (gas)	Water & Gas
	SDR 11	d 20 - 800	16 bar (water) and 10 bar (gas)	Water & Gas
Stub flange short for FIP butterfly valve type FE and FK	SDR 17	d 50x40 - 200x400	10 bar	Water
	SDR 11	d 50x40 - 160x400	16 bar	Water
Stub flange short & extended for entrance side FIP check valve type CR and FR	SDR 17	d 50x40 - 50x280	10 bar	Water
	SDR 11	d 50x40 - 50x280	16 bar	Water
Tee & Bend 90° short	SDR 33	d 110 - 500	3.2 bar	Water
	SDR 17	d 50 - 500	10 bar (water) and 5 bar (gas)	Water & Gas
	SDR 11	d 20 - 500	16 bar (water) and 10 bar (gas)	Water & Gas
Tee 90° reduced short	SDR 17	d 140x63-225x125	10 bar (water) and 5 bar (gas)	Water & Gas
	SDR 11	d 90x32-180x125	16 bar (water) and 10 bar (gas)	Water & Gas
Reducer concentric DIN short	SDR 33	d 200x140 - 315x280	3.2 bar	Water
	SDR 17	d 50x32-900x800	10 bar (water) and 5 bar (gas)	Water & Gas
	SDR 11	d 25x20-630x560	16 bar (water) and 10 bar (gas)	Water & Gas
Reducer eccentric short REBE	SDR 17	d 160x90 - 315x280	10 bar (water) and 5 bar (gas)	Water & Gas
	SDR 11	d 160x90 - 315x280	16 bar (water) and 10 bar (gas)	Water & Gas
	SDR 17	d 63 - 800	10 bar (water) and 5 bar (gas)	Water & Gas
End cap long/short CBE	SDR 11	d 20 - 630	16 bar (water) and 10 bar (gas)	Water & Gas

Large range of unions and adaptors available.

Long fittings for butt-welding and electrofusion	SDR	Diameter	Maximum Operating Pressure	Application
Stub flange long	SDR 17	d 50-800	10 bar (water) and 5 bar (gas)	Water & Gas
	SDR 11	d 20 - 710	16 bar (water) and 10 bar (gas)	Water & Gas
Tee 90° long	SDR 17	d 50-630	10 bar (water) and 5 bar (gas)	Water & Gas
	SDR 11	d 20 - 630	16 bar (water) and 10 bar (gas)	Water & Gas
Tee 90° reduced long	SDR 17	d 63x50 - 315x250	10 bar (water) and 5 bar (gas)	Water & Gas
	SDR 11	d 63x50-315x250	16 bar (water) and 10 bar (gas)	Water & Gas
Tee 45° long	SDR 17	d 50 - 225	10 bar (water) and 5 bar (gas)	Water & Gas
	SDR 11	d 40 - 225	16 bar (water) and 10 bar (gas)	Water & Gas
Elbow 45°/90° long	SDR 17	d 50 - 315	10 bar (water) and 5 bar (gas)	Water & Gas
	SDR 11	d 20 - 315	16 bar (water) and 10 bar (gas)	Water & Gas
Reducer concentric long	SDR 17	d 63x50 - 630x560	10 bar (water) and 5 bar (gas)	Water & Gas
	SDR 11	d 25x20 - 630x560	16 bar (water) and 10 bar (gas)	Water & Gas



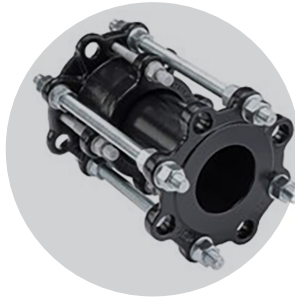
Mechanical fittings

For connecting different types of pipes





UltraGrip



Dismantling Joints



AquaFast



MaxiFit

Viking Johnson is a world leader in the design, manufacture and supply of couplings, flange adaptors, and pipe repair solutions. Part of Crane Building Services & Utilities, Viking Johnson services the international water, wastewater, gas and industrial markets with a range of products that can be used to connect or repair many types of pipe material and are suitable for dedicated and wide tolerance applications, from 40mm to 4000mm in diameter.

For more than 90 years, Viking Johnson has delivered products that exceed market expectations. Our design team utilises the latest engineering design software and specifies manufacturing processes that ensure repeatability and longevity.

Industry specifications are our starting point and to ensure a 50 year design life, Viking Johnson products undergo accelerated ageing regime in our in-house test facilities – providing customers with complete peace of mind.

Viking Johnson operates a quality management system accredited to ISO 9001 combined with an environmental policy accredited to ISO 14001. In addition, some product ranges and components have been approved by 3rd party organisations. These include:

- **Marine – Bureau Veritas and ABS**
- **Potable water – WBS and ACS**
- **Specific regions – GOST-R, Bulgarkontrola, Belarus Technical Approval and many others.**



FM 00311

EMS 553775



VC 669122
VC 673979





Industry:

Global benchmarks

Global trends have forced the industry to rapidly evolve. As a result, engineering requirements are ever more demanding. This is why Aliaxis is investing in its range of pipes and pressure systems for fluid management. Our pipes and fittings for industrial processes comply with industrial clients' strict engineering requirements in terms of temperature, pressure, chemical resistance, abrasion resistance and more.



Water Treatment

With our solutions, you can build durable, profitable and low-maintenance water treatment plants. Our products, easy and safe to install, are resistant to corrosive substances. As the leading provider of industrial valves, we offer a fast delivery service for our automatic valves and in-house production of special parts.

Piping and pressure system solutions for fluid management

- **Valves, pipes, fitting and accessories**
- **Mechanical clamps**
- **Mechanical accesories**





Valves, pipes and fittings

In different plastic materials for industrial applications





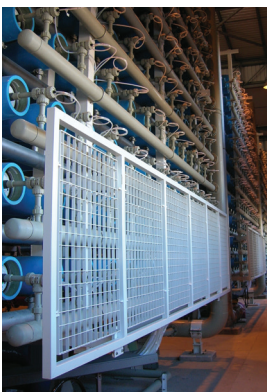
FIP has been an Italian pioneer of top-quality polymer valves, pipes and fittings for more than 60 years. It is renowned for the design and manufacture of valves, measurement and control instruments and pressure piping systems which offer greater plant efficiency.

The FIP product portfolio, manufactured in Italy, provides effective solutions for pressure pipeline industrial systems. FIP products are also ideal for dealing with fluids at high temperatures, chemically aggressive conditions and in industrial situations that demand reliability and long lasting performance. FIP-FLS instrumentation line offers solutions for flow, pH/ORP, conductivity

and pressure/level monitoring. This product line includes a wide selection of systems ideal for measuring and controlling industrial processes as well as for monitoring in water supply network.



An ideal solution for process pipework including aggressive and corrosive fluids. This encompasses **desalination plants, water distribution systems, civil and industrial water treatment and the chemical industry. It also includes swimming pools, irrigation, sports facilities, marine and more.**





Products' Highlights

Taking advantage of thermoplastic resins versatility, FIP valves and fittings are suitable to various needs according to the application required.

FIP focuses on offering proper solutions for industrial systems in chemical, textile, pharmaceutical, food, electronic, mining and other fields by producing high efficient products operating in environment where high temperatures and aggression of fluids demands reliable and long lasting products.

VKD DUAL BLOCK 2-Way ball valve



FIP has developed a VKD DUAL BLOCK ball valve to introduce a high reference standard in thermoplastic valve design. VKD is a True Union ball valve that meets the most stringent needs required by industrial applications.

- Ergonomic HIPVC handle equipped with removable tool to adjust the ball seat carrier
- Handle lock 0° - 90° SHKD (available as an accessory) ergonomically operable during service and padlockable
- Robust integrated bracket for valve anchoring, for easy and quick automation even after valve installation on the system (optional)
- DUAL BLOCK patented lock system that ensures union nut tightening hold even in severe conditions such as vibrations or heat dilation

FK DN 350-400 The new large diameter butterfly valve



The FK is a butterfly valve for shutting off or regulating flow, with structural characteristics that make it ideal for water treatment processes as well as for industrial applications requiring high performance and longterm reliability. It is now available from DN 40 to DN 400.

DK DIALOCK DN 15-65 - manual and actuated version



The DK DIALOCK diaphragm valve is particularly suitable for shutting off and regulating abrasive or dirty fluids. The new internal geometry of the body optimised fluid dynamic efficiency by increasing the flow rate and ensuring an optimum linearity of the flow adjustment curve. The DK/CP is extremely compact and very light.

FLS F3.00.W Wireless Paddlewheel Flow Sensor



The new FFLS F3.00.W Wireless Paddlewheel Flow Sensor is an innovative system for flow monitoring based on Bluetooth Low Energy transmission technology. The paddlewheel flow sensor is provided with an integrated transmitter that communicates with the receiver. The FLS B.L.E. F3.00.W is a reliable solution for every kind of solid-free liquid. Easy and quick to install, it is suitable for pipes in different materials, sized from DN15 to DN600 (0.5" to 24"). It can cover also long operating distances (up to 100 meters) and work in presence of electromagnetic interferences generated by devices like pumps or inverters. Also, the auto-diagnostic system keeps updated about a possible signal loss and alerted about low battery status.



FIP Valves & Fittings Product Range

PP-H Pipes, Fittings & Valves (Beige)	Diameter	Temperature Range	Maximum Working Pressure	Application
Ball Valves	d 16 - 110	0 °C to 100 °C	10 bar	High chemical resistance, Optimal thermal stability, ideal application in industry guaranteeing excellent mechanical and impact resistance with high safety factors.
Butterfly Valves	d 50 - 400			
Diaphragm Valves	d 16 - 110			
Check Valves	d 20 - 315			
Sediment Strainer	d 20 - 110			
Butt Welding	d 20 - 400			
Socket Fusion	d 20 - 110			
Threaded	R 1/2" - 2"			
Pressure Pipes	d 20 - 500 (SDR 11)		6 bar - 10 bar	
	d 20 - 800 (SDR 17)			

PVDF Pipes, Fittings & Valves (Translucent White)		Diameter	Temperature Range	Maximum Working Pressure	Application
Ball Valves	d 16 - 110	-40 °C to 140 °C	16 bar	Excellent chemical resistance and thermal stability, ideal for all applications where high operating temperature are required, with an extremely low level of fluid contamination, and optimal resistance to ageing under the effect of atmospheric agents & UV radiation. Perfect for ultra-pure water and chemicals where contamination free properties are required. Solef resins guarantee optimal fire resistance.	
Butterfly Valves	d 50 - 400				
Diaphragm Valves	d 16 - 110				
Check Valves	d 20 - 315				
Socket Fusion	d 16 - 110				
Pressure Pipes	d 16 - 160 (SDR 21)	10 bar - 16 bar			
	d 16 - 280 (SDR 33)				

C-PVC Pipes, Fittings & Valves (Light Grey)	Diameter	Temperature Range	Maximum Working Pressure	Application
Ball Valves	d 16 - 110	0 °C to 100 °C	16 bar	High chemical resistance especially to strong inorganic acids, bases and alkaline solutions. It also offers total compatibility also for the transfer of treated and untreated drinking water, as well as demineralized water and spa water for therapeutic application. Optimal thermal stability with good rigidity, very low coefficients of thermal expansion and optimal safety factors in service. C-PVC resins guarantee optimal fire resistance.
Butterfly Valves	d 50 - 315			
Diaphragm Valves	d 20 - 110			
Check Valves	d 20 - 63			
Sediment Strainer	d 20 - 63			
Socket Solvent Weld Fittings	d 16 - 225			
Adaptor Fittings	d 16 - 63 : R 3/8" - 2"			
Pressure Pipes	d 16 - 225		10 bar - 16 bar	

U-PVC Pipes, Fittings & Valves (Dark Grey)	Diameter	Temperature Range	Maximum Working Pressure	Application
Ball Valves	d 16 - 110	0°C to 60°C	16 bar	Good chemical resistance, totally compatible for the handling of food grade fluids, treated and untreated drinking water as well as demineralized water. Good thermal stability particularly in the intermediate temperature range between 20 °C and 50 °C.
Butterfly Valves	d 50 - 400			
Diaphragm Valves	d 12 - 110			
Check Valves	d 16 - 315			
Sediment Strainer	d 16 - 110			
Socket Solvent Weld Fittings	d 12 - 315			
Adaptor Fittings	d 16 - 125 : R 3/8" - 4"			
Threaded BSP Fittings	R 3/8" - 4"			
Pressure Pipes	d 16 - 315		10 bar - 16 bar	

Automation Range	Diameter
Ball Valves: both electrically or pneumatically actuated	d 16 - 110
Butterfly Valves: both electrically or pneumatically actuated	d 50 - 315
Diaphragm Valves: pneumatically actuated	d 12 - 110
Solenoid Valves: electrically actuated.	d 10 - 20



Mechanical clamps

To connect different types of pipes in drinking water supply and the naval sector

straub 

the original



STRAUB products are manufactured in Switzerland and the company has over 50 years of experience in the design and production of first-class mechanical coupling and repair solutions. It is considered "the original" in its field.

The STRAUB range of products offer a simple means of mechanically joining plain-end pipes in any material, including metal or plastic. The repair couplings provide efficient pipe damage control in a variety of piping systems, including those under pressure. The benefits include simple

and rapid installation without the need for specific tools or pipe preparation. In addition, the products are lightweight and save space.



STRAUB pipe couplings are approved for virtually all piping systems in all sectors for example: **water management, industry, ship building, offshore, civils, chilled water lines for both above and below ground.**



Products' Highlights

Universal Use

Compatible with almost any traditional jointing system, join pipes of the same or dissimilar materials, quick and simple repairs of damaged pipes without service interruptions.

Economical

Pre-assembled design ensures simple and rapid installations, for use on plain-end pipes without the need for costly pipe end preparation, no special assembly tools and set-up times.

Durable

Progressive sealing and anchoring effect, corrosion and temperature resistant, long life service.

Reliable

Stress-free, flexible pipe joint, compensates axial movements and angular deflection, pressure-resistant and leak-proof even in inaccurate pipe assembly.

Easy handling & Space saving

Detachable & reusable, maintenance-free, no time consuming alignment and fitting work. Compact design for space-saving installation pipes, allow to use a low profile pipe insulation, low weight compared to traditional methods such as flanges.

STRAUB-GRIP Axial Restraint

STRAUB-METAL-GRIP and STRAUB-GRIP pipe couplings are pipe connections with axial restraint for all metal pipes and rigid plastics. There are countless possible uses on almost all pipe systems due to the universal connection solution. The installation is performed on smooth-ended pipes without any pipe end machining.

Dimensions:

STRAUB-METAL-GRIP outside diameter 30.0 up to 609.6 mm, with temperature from -30 °C up to +100 °C.

STRAUB-GRIP outside diameter: 25.0 up to 711.2 mm, with temperature from 20 °C up to +180 °C.

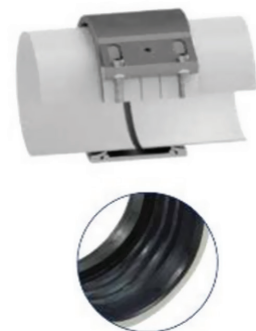


STRAUB-FLEX Axially Flexible/Non-axial Restraint

All pipe materials can be reliably connected with STRAUB-FLEX couplings. STRAUB-FLEX pipe couplings enable pipe connections for practically all conceivable pipe diameters, for the same or different types of pipe materials, various media and temperatures as well as for a wide range of the operating pressure values. The sealing sleeve separates the coupling casing from the pipe surface so that sound, vibrations and oscillations are optimally damped.

Dimensions:

STRAUB-FLEX outside diameter: 48.3 up to 4064.0 mm, with temperature from -20 °C up to +180 °C (STRAUB-FLEX 3.5 + 4 up to +100°C).



STRAUB Product Range

Axial restraint pipe couplings	Diameter	Maximum Operating Pressure	Maximum Operating Temperature
STRAUB-METAL-GRIP (Pull out resistant pipe coupling for all metal pipes)	d 30.0 - 609.6	67 bar	-30 °C to +100 °C
STRAUB-GRIP (Pull out resistant pipe coupling for all metal pipes)	d 21.3 - 711.2	64 bar	-20 °C to +100 °C
STRAUB-FIRE-FENCE (For use wherever fire protection is required by law)	d 25.0 - 457.2	67 bar	-30 °C to +100 °C
STRAUB-COMBI-GRIP (Pull out resistant pipe coupling for transitions from plastic to metal piping)	d 40.0/38.0 - 355.0/355.6	16 bar	-20 °C to +100 °C
STRAUB-PLAST-GRIP (Pull out resistant pipe coupling for plastic pipes)	d 40.0 - 355.0	16 bar	-20 °C to +100 °C
STRAUB-PLAST-PRO (Axial restraint connection of pressure pipes made of PE)	d 63.0 to 355.0	16 bar	-5 °C to +40 °C

Non-axial restraint pipe couplings	Diameter	Maximum Operating Pressure	Temperature Range
STRAUB-FLEX 1 (Axially flexible pipe coupling for pipes of all materials)	d 48.3 - 168.3	25 bar	-20 °C to +100 °C
STRAUB-FLEX 2 (Axially flexible pipe coupling for pipes of all materials)	d 172.0 - 2032.0	25 bar	-20 °C to +100 °C
STRAUB-FLEX 3 (Axially flexible pipe coupling for pipes of all materials)	d 219.1 - 2032.0	25 bar	-20 °C to +100 °C
STRAUB-FLEX 3.5 (Axially flexible pipe coupling for pipes of all materials)	d 323.9 - 1219.2	25 bar	-20 °C to +100 °C
STRAUB-FLEX 4 (Axially flexible pipe coupling for pipes of all materials)	d 323.9 - 812.8	25 bar	-20 °C to +100 °C
STRAUB-OPEN-FLEX 1 (Hinged, axially flexible pipe coupling for the repair of pipes of all materials)	d 48.3 - 168.3	25 bar	-20 °C to +100 °C
STRAUB-OPEN-FLEX 2 (Hinged, axially flexible pipe coupling for the repair of pipes of all materials)	d 172.0 - 2032.0	25 bar	-20 °C to +100 °C
STRAUB-OPEN-FLEX 3 (Hinged, axially flexible pipe coupling for the repair of pipes of all materials)	d 219.1 - 4064.0	25 bar	-20 °C to +100 °C
STRAUB-OPEN-FLEX 3.5 (Hinged, axially flexible pipe coupling for the repair of pipes of all materials)	d 323.9 - 4064.0	25 bar	-20 °C to +100 °C
STRAUB-OPEN-FLEX 4 (Hinged, axially flexible pipe coupling for the repair of pipes of all materials)	d 73.0 - 168.3	25 bar	-20 °C to +100 °C
STRAUB-OPEN-FLEX 1 GT (Axially flexible pipe coupling for pipes of all materials with side outlet)	d 48.3 - 168.3	16 bar	-20 °C to +70 °C
STRAUB-STEP-FLEX (Axially flexible pipe coupling for all pipe materials to compensate different pipe diameters)	d 219.1 - 812.8	25 bar	-20 °C to +100 °C
STRAUB-STEP-FLEX 2 (Axially flexible pipe coupling for all pipe materials to compensate different pipe diameters)	d 914.4 - 2032.0	25 bar	-20 °C to +100 °C
STRAUB-STEP-FLEX 3 (Axially flexible pipe coupling for all pipe materials to compensate different pipe diameters)			

STRAUB Repair Products	Diameter	Maximum Operating Pressure	Maximum Operating Temperature
STRAUB-REP-FLEX (Complete repair coupling for damaged water pipes)	d 46.0 - 429.0	16 bar	-20 °C to +100 °C
STRAUB-CLAMP SCE (One-piece, axially flexible repair clamp for pipes of all materials)	d 44.0 - 330.0	16 bar	-5 °C to +40 °C
STRAUB-CLAMP SCZ (Two-pieces, axially flexible repair clamp for pipes of all materials)	d 88.0 - 440.0	16 bar	-5 °C to +40 °C





Agriculture:

A wide range of solutions for modern irrigation

Feeding growing communities is a worldwide challenge that will become even more difficult over the next decades. This will entail more pressure on precious water supplies, which is why more efficient agriculture is essential to create a sustainable future for people and our planet.

At Aliaxis, we offer a range of solutions with this goal, with quality systems which help farmers to manage crop irrigation and provide drinking water for their animals.

Localised, hydroponic and above-ground irrigation systems

- **Filtmaster filtration system**
- **Piping system for wells and drilling**
- **Range of compression fittings**



Filtration systems

For the protection of modern irrigation installations

FILTEMASTER



Jimten Filtmaster is manufactured in Spain and uses the most advanced technology to achieve efficient water filtration in the industrial and agricultural fields. Its modular filter system with filter media, screen and disc filters has a wide molecular capacity which means it is versatile and suited to any kind of water.

Furthermore, the patented disc system allows a real micron gap along the filtering surface. Jimten Filtmaster offers several unique benefits

which include simple installation, adaptation to a variety of water types and ease of cleaning. This makes it one of the most efficient, versatile and profitable filtration tools on the market.



Filtmaster automatic filtration stations can be used in a wide range of applications as: **cooling tower protection, nozzle protection, pre-filtration to protect UF/RO membranes, filtration of wastewater for reuse and filtration for irrigation.**



Products' Highlights

Filtmaster "Easy-fit Skids"

The most efficient, versatile, and profitable filtering tool. With a 30% improvement on height, Filtmaster "Easy-fit Skids" is compact, easy to install, and maintain.

Effective: The application of the most advanced technology results in a high level of filtering performance.

Versatile: A wide modulability of the components allows an ideal use for any type of water and in agricultural and industrial areas.

Profitable: The design of its components allows optimizing the cycles between cleaning with lower energy costs.



Jimten Filtmaster Product Range

Discs Filter	20 Microns Filter	25 Microns Filter	50 Microns Filter	100 Microns Filter	130 Microns Filter	200 Microns Filter
Anti-algae Disc Filter (¾" & 1" filters)					X	
3" & 4" double body disc filter with stainless steel clamp	X		X	X	X	X
3" & 4" compact double body disc filter with stainless steel clamp	X		X	X	X	X
3" & 4" super compact double body disc filter with stainless steel clamp	X		X	X	X	X
2" standard disc filter with PAFV clamp	X		X	X	X	X
2" & 3" disc filter with PAFV clamp	X		X	X	X	X
2" long disc filter with PAFV clamp	X		X	X	X	X
2" & 3" standard hydrocyclonic disc filter with stainless steel clamp	X		X	X	X	X
2" hydrocyclonic disc filter with stainless steel clamp	X		X	X	X	X
2" long hydrocyclonic disc filter with stainless steel clamp	X		X	X	X	X
3" & 4" compact hydrocyclonic double body disc filter with stainless steel clamp	X		X	X	X	X
2" standard hydrocyclonic disc filter with PAFV clamp	X		X	X	X	X
2", 3" hydrocyclonic disc filter with PAFV clamp	X		X	X	X	X
2" long hydrocyclonic disc filter with PAFV clamp	X		X	X	X	X
3" & 4" hydrocyclonic double body disc filter with PAFV clamp	X		X	X	X	X

Screen Filter	20 Microns Filter	25 Microns Filter	50 Microns Filter	100 Microns Filter	130 Microns Filter	200 Microns Filter
2" screen filter (S cartridge)				X	X	
2" long screen filter (M cartridge)				X	X	X
3" screen filter (M cartridge)				X	X	X

Filtration Stations	20 Microns Filter	25 Microns Filter	50 Microns Filter	100 Microns Filter	130 Microns Filter	200 Microns Filter
Manual Backwash Filtration 2x2", 3x2", 4X2", 5x2", 6x2"	X		X	X	X	X
MasterONE automatic filtration station 1x2"		X	X	X	X	X
single body automatic filtration stations 2x2", 3x2", 4X2", 5x2", 6x2"		X	X	X	X	X
single body automatic filtration stations 2x3", 3x3", 4X3", 5x2", 6x3", 8x3", 10x3"		X	X	X	X	X
double body automatic filtration stations 2x3", 3x3", 4X3", 5x2", 6x3", 8x3", 10x3"		X	X	X	X	X
horizontal double body automatic filtration stations 2x3", 3x3", 4X3", 5x2", 6x3", 8x3", 10x3"		X	X	X	X	X

Automatic Discs Filter	20 Microns Filter	25 Microns Filter	50 Microns Filter	100 Microns Filter	130 Microns Filter	200 Microns Filter
2" & 3" automatic disc filter		X	X	X	X	X
3" & 4" double body automatic disc filter		X	X	X	X	X
2" single body automatic filtration stations		X	X	X	X	X



System of PVCU pipes

For underground water collection

ashirvad

We are the first business in the world to invent and develop this type of product; the Ashirvad PVCU piping system is already widely known globally. It is available in more than 40 countries and has been installed in more than 30 million drilling pumps.

This piping system is available in sizes ranging from 25 mm to 150 mm in diameter, these pipes are made from PVCU and are anticorrosive. Successfully installed all over the world for the past 20 years.

Why choose this system:

- **Safe** and reliable
- **Certified** for drinking water
- **Quick and easy to install:** square-threaded and lip seal system. No welding or flanges required
- **Corrosion resistant:** prolonging its working life while improving energy costs.
- Reduced pressure drop: extremely smooth inner wall
- **High resistant** to internal pressure
- **Light:** easy installation and lower shipping cost
- Low maintenance

Piping range and classification: Standard / Standard Plus / Heavy / Super Heavy

Bi-fold PVC-U pipes are available in four different models:

- **Standard**
- **Standard Plus**
- **Heavy**
- **Super Heavy**

Choose which piping model to install by comparing the maximum height of the electric pump at zero flow with the maximum pressure of the piping.

Example: the maximum height of the electric pump at zero flow (pump manufacturer's technical specifications): 210 metres. Diameter of pipe being installed, chosen according to the required flow rate: 3". Tube model being installed: heavy 26 bar.

PVC-U tube, Standard model Standard



Diameter (mm.)	Pressure (kg/cm)	Height (metres)
1 1/4"	25	250
1 1/2"	26	260
2"	20	200
2 1/2"	16	160
3"	17	170
4"	15	150
5"	16	160

PVC-U tube, Heavy model Heavy



Diameter (mm.)	Pressure (kg/cm)	Height (metres)
1 1/4"	35	350
1 1/2"	35	350
2"	27	270
2 1/2"	26	260
3"	26	260
4"	26	260
5"	26	260
6"	26	260

PVC-U tube, Standard Plus model Standard Plus



Diameter (mm.)	Pressure (kg/cm)	Height (metres)
2"	21	210
2 1/2"	21	210
4"	21	210
5"	21	210

PVC-U tube, Super Heavy model Super Heavy



Diameter (mm.)	Pressure (kg/cm)	Height (metres)
2"	35	350
2 1/2"	35	350
3"	35	350
4"	35	350
5"	35	350



Compression fittings

For connecting polyethylene pipes in agri-tech





ASTORE thermoplastic pipework systems have been manufactured in Europe and used for the pressure pipework requirements of different market sectors for many years. Since 1970 Astore has been known worldwide for the cost effective and reliable thermoplastic fittings and valves it offers for pressure pipework. The ASTORE range is manufactured from either ABS or PVC-U and is used for a variety of applications where a lightweight, flexible and durable pipework system is required.

Furthermore, ASTORE also offers a wide range of clamp saddles and compression fittings as well as a modular manifold system that can all be used for a wide range of water related applications.



Astore PP compression fittings are joints for PE pipes dedicated to **water adduction systems**. **They can be used both in irrigation field and drinking water systems.**





Products' Highlights

Wide Range of Compression Fittings

Astore polypropylene compression fittings are suitable for installations that may require occasional disassembly or partial removal for maintenance. They can be used in both irrigation and drinking water systems, where a quick and simple pressure connection is required.

Range of Joints

Astore joints range includes a large number of items able to satisfy a very wide range of plant engineering installation requirements.

The joints range leaves from d.16 mm up to d.110 mm. The joints provided with threads have a metal reinforcement on the external part of the thread, leaving from r. 1 1/4".





Astore Product Range

Compression Fittings	Diameter	Maximum Working Pressure	Application
Male Adaptor	d 16 x 3/8" - 110 x 4"	16 bar - from d 16 to 63 10 bar - from d 75 to 110	Water distribution systems
Coupling	d 16 x 16 - 110 x 110		
Reducer Coupling	d 20 x 16 - 110 x 90		
Female Adaptor	d 16 x 3/8" - 110 x 4"		
Plus	d 16 - 110		
Elbow	d 16 x 16 - 110 x 110		
Elbow Male Threaded	d 16 x 1/2" - 110 x 4"		
Elbow Female Threaded	d 16 x 3/8" - 110 x 4"		
Tee	d 16 x 16 x 16 - 110 x 110 x 110		
Tee Male Threaded	d 6 x 1/2" x 16 - 110 x 4" x 110		
Tee Female Threaded	d 16 x 3/8" x 16 - 110 x 4" x 110		
Flange Adaptor	d 50 x 1 1/2" - 110 x 4		
Reducing Tee	d 25 x 20 x 25 - 63 x 50 x 63		
Wall Brackets	d 25 x 3/4		
Adaptor with nut	d 25 x 1" & 32 x 1"		
Tightening key	d 40-63 & 75-110		

Clamp Saddles	Branches	Maximum Working Pressure	Application
Single Branch - Coupling with pipes for d 20-110 Provided with 2 or 4 bolts according to the diameters	Threaded Branches from 1/2" - 3"	6 bar	Water distribution systems
Single Branch - Coupling with pipes for d 20-315 Provided with 2, 4 or 6 bolts according to the diameters & metal reinforcing ring on the threaded branches	Threaded Branches from 1/2" - 4"	10 bar	
Double Branch - Coupling with pipes for d 63-315 Provided with 2, 4 or 6 bolts according to the diameters & metal reinforcing ring on the threaded branches	Threaded Branches from 1/2" - 4"	10 bar	



Services:

Our decades-long experience in infrastructure and industry projects means that we can provide you with professionals that can support you in all technical matters:

Technical advice and design solutions made to measure

In drinking water transport and supply, orography and planimetry determine the means. This is why the experts from our Technical Assistance service will help you with the design and manufacturing of polyethylene parts for bespoke projects.

This service allows you to save time and resources, as well as enjoy greater flexibility in your installation.

Hydraulic and mechanical calculation tool for drinking water

Our collaboration with the Spanish Association of Piping Manufacturers (ASETUB) has allowed us to develop an extremely useful tool, with which you'll be able to obtain the mechanical and hydraulic calculation of your polyethylene plastic piping system. Find the tool on ASETUB's website.

With this service, you'll save time when designing your projects.



Pre and post sale technical and commercial support

We can assist you when selecting products for infrastructure, industry or irrigation applications. In addition, we can help you with the calculation and design of specialised agricultural and industrial filtration systems.

With this service, all your projects will benefit from greater safety, confidence and peace of mind thanks to product knowledge.

Aliaxis Academy

We offer the opportunity to broaden your knowledge and stay up to date in a continuous and specialised manner. You'll be able to find training classes in our Okondo and Alicante factories, where our experts will show you how to optimise your installations with our solutions.

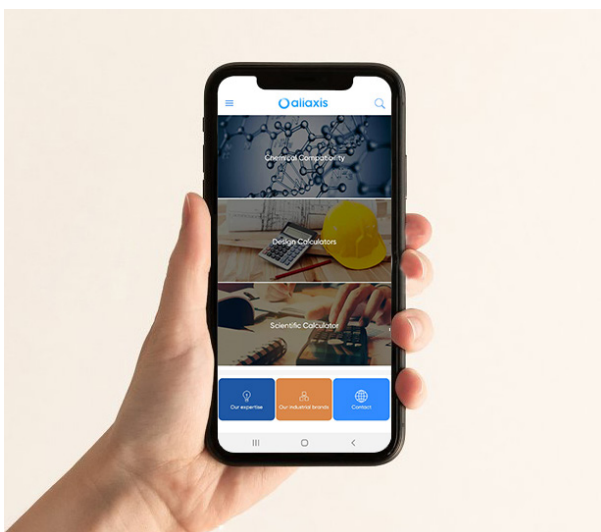
This service lets you get the best performance from our solutions.

Aliaxis Industrial App

We provide access to information on chemical compatibility of materials and calculation tools for design, which are all very useful for your projects. Such as the calculation of water hammer in the system or head loss in the valves.

Additionally, you will be able to see our factories and access explications on product applications for the different sectors that we work in.

With our App you will always have technical information on our products and solutions at hand.



Discover all this service's possibilities by scanning this QR code:







Success stories



Projects



Cruise ship terminal in the port of Dubai, UAE



Hotel Atlantis, water maintenance, UAE



MBZ City in Fujairah, 1100 housing units, UAE



Water connections to the new Al Ain en Al Mutaredh hospital, UAE



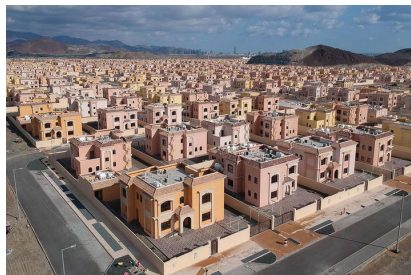
Update to the fire extinguishing network in Safaniyah's petrochemical plant, Saudi Arabia



Ma'aden – Civil Works Project, Saudi Arabia



Water services – Emirate Al Hayer housing project, UAE



Water network and domestic connections



Dammam University gas network, Saudi Arabia



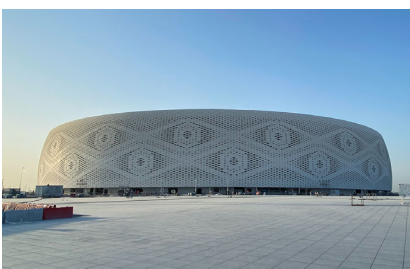
Al Ghadeer Villas, UAE



DMCC – Jumeirah Lake Towers, U



Akoya Oxygen Golf, UAE



Al Thumama Stadium, Qatar



International Airport of Bahrain, Bahrain



Eindhoven data centres, The Netherlands



Energy plant maintenance in Jebel Ali, UAE



BorWin-3 – Repairs to fire extinguishing networks, UAE



Renovation of Riyadh's water tower, Saudi Arabia



Dubai Hills Estate (plant and GLP network), UAE



JVC District's cooling plant, Jumeirah Village Circle, UAE



Abu Dhabi Airport, UAE



Al Ain Zoo, UAE



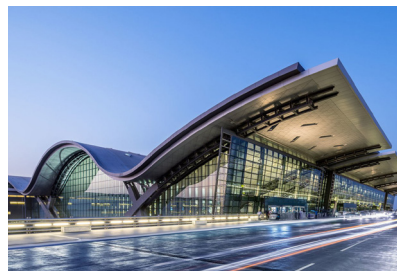
Crocodile pool in Al Dhaid, UAE



Jubail Phase IV drinking water plant, Saudi Arabia



Yas Island water park, UAE



New ACID line in Hamad International Airport, Qatar



WWTP remodelling in ethylene plant.



EMICOOL district Dubai, EAU



Gas processing plant in Abu Dhabi, UAE



Khalifa Port Abu Dhabi, UAE



Sea World Abu Dhabi, EAU

Aliaxis Iberia
aliaxis.es

Jimten, S.A.
C/ del Yen, s/n - Pol. Las Atalayas
03114 Alicante, España
+34 965 109 044



Empresa registrada según normas

